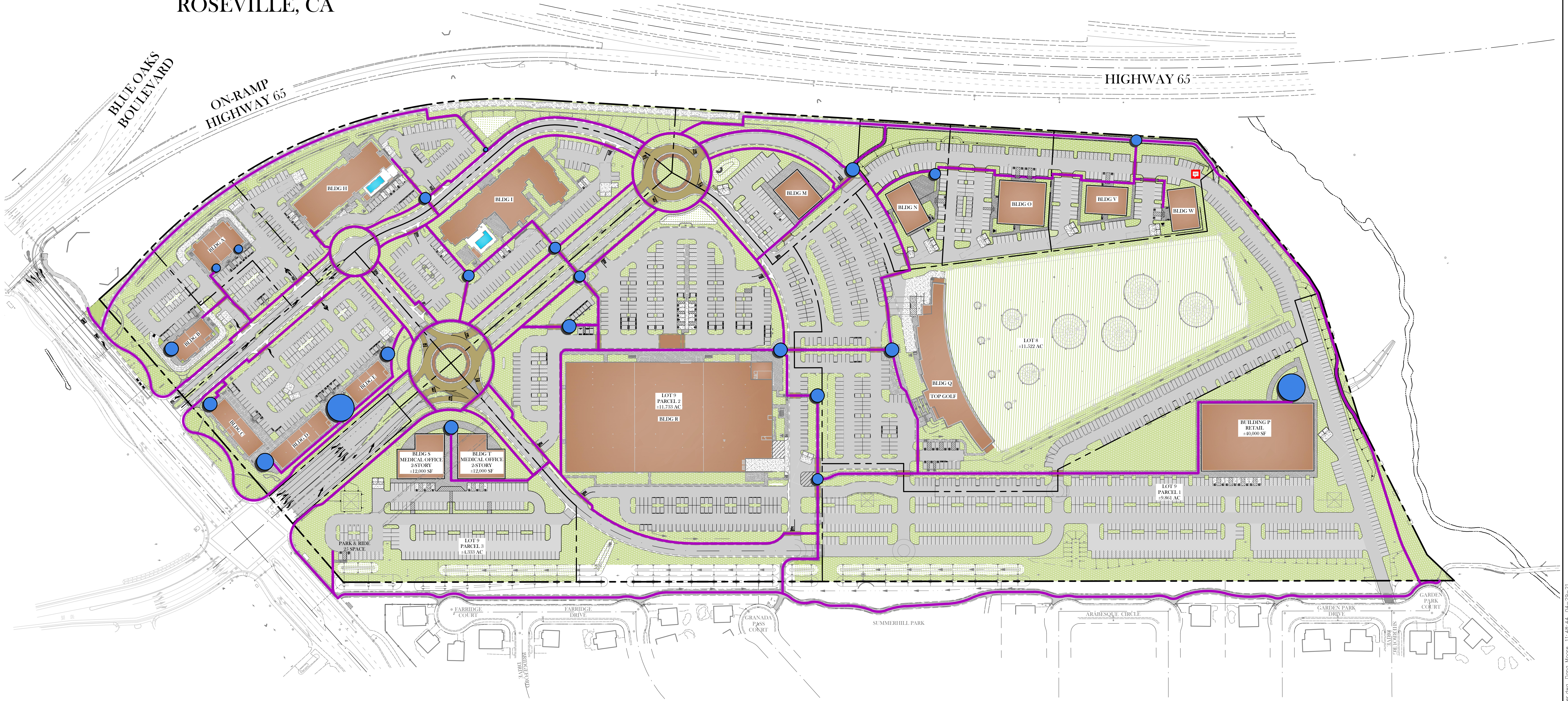





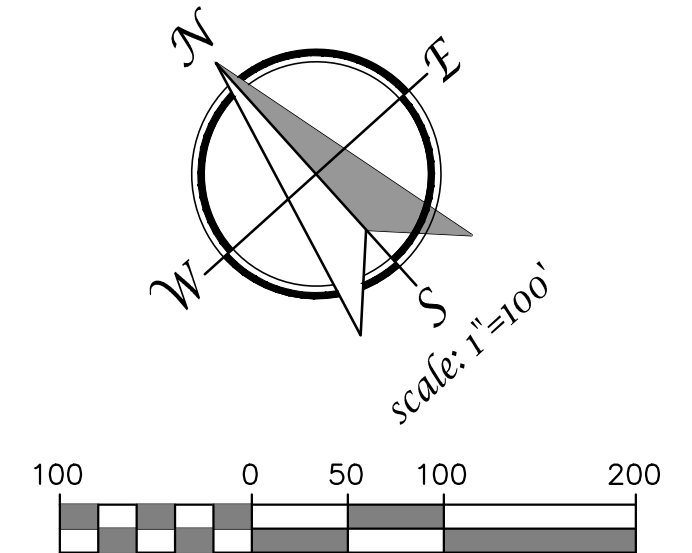
PRELIMINARY PEDESTRIAN PLAN
NCRSP - PARCEL 49
 MAJOR PROJECT PERMIT - STAGE 1
 ROSEVILLE, CA

PC EXHIBIT F

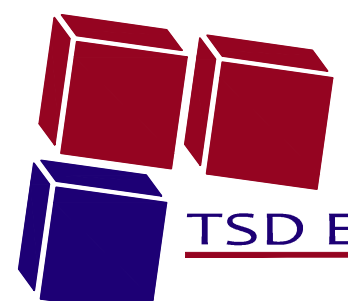


**NCRSP - PARCEL 49
 PEDESTRIAN LEGEND**

-  PEDESTRIAN GATHERING SPACES
-  PEDESTRIAN PATHWAYS
-  LANDSCAPE AREAS



PRELIMINARY PEDESTRIAN PLAN
 APRIL 29, 2021



TSD ENGINEERING, INC.
 expect more.

785 Orchard Drive, Suite #110
 Folsom, CA 95630
 Phone: (916) 608-0707
 Fax: (916) 608-0701

P:\Projects\444-001\02_DWG\B-Planning\06_Preliminary Pedestrian Plan - Tower.dwg, Dana Moore, 11-08-14, 04-29-21